

MENU

FORRETTER / STARTERS

Andeconfit med rødkål, portvinsglace og marinerede abrikoser og svesker
Confit of duck with red cabbage, port wine glaze and marinated apricots and prunes 140

Blomkålsuppe med trøffelolie
Cauliflower soup with truffle oil 115

Husets egen krebsesalat / *Crayfish salad of the house* 120

HOVEDRETTER / MAIN COURSES

'Persetorsk' med hollandaisesauce
'Persetorsk' (cod) with hollandaise sauce 250/305



Lille / almindelig
Small / normal

Rensdyrgryde med vildtsauce, kålrabipuré og rørte tyttebær
Reindeer pot with game sauce, Swedish turnip purée and stirred lingonberries 265/325

Husets egen bacalao / *Bacalao of the house* 225/270

DESSERTER / DESSERTS

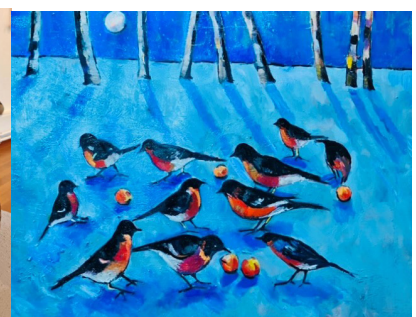
Mandeliscreme med Amaretti crumbles
Almond ice cream with Amaretti crumbles 110

Kokkens egen 'crème caramel'
The chef's own crème caramel 105

Et udvalg af danske oste / *A selection of Danish cheeses* 130/175

Vinmenu til osten - Wine menu to go with the cheese 165

Hjemmelavet chokolade / petit fours / *Home-made chocolates / petit fours* 65



Esplor water and homebaked bread 60

Taster menu

Kan bordet enes om det, er der mulighed for at bede tjeneren om at sammensætte en taster-menu, dvs. man vælger 4, 5 eller 6 retter, som vil blive serveret i lidt mindre portioner for at man kan overkomme at smage en større del af menuen. Mats vil kunne tilbyde en passende vinmenu. Prisen vil selvfølgelig afhænge af de konkrete valg. Tag gerne kontakt med betjeningen for at få en særlig oplevelse!

If the whole table agrees, you could ask for a taster menu. You can select 4, 5 or 6 dishes that will be served in smaller servings, so you could explore a larger part of the menu without overfeeding. Mats will be delighted to suggest an accompanying wine menu. The price will naturally depend on your choices. Just contact the staff in order to experience a special treat!

ALLERGEN / FOOD ALLERGIES AND INTOLERANCES

Før bestilling, venligst kontakt os om det er specielle behov / Before ordering, please contact us regarding your eventual requirements